

VELOHOME

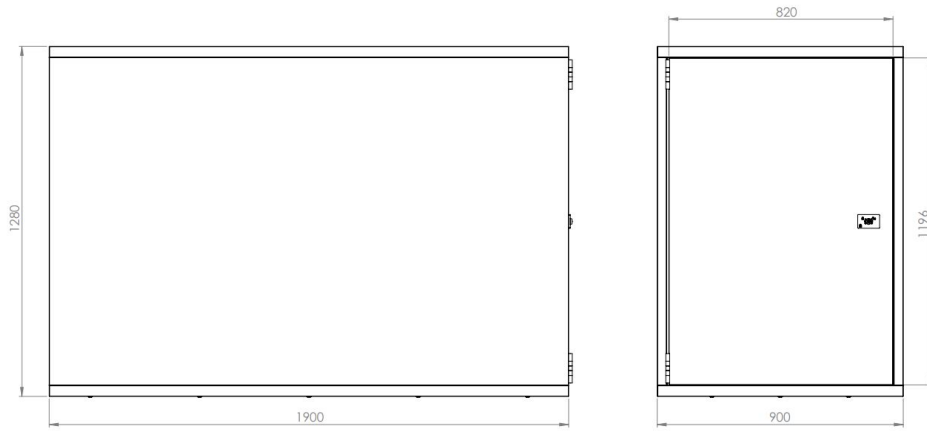


GREASEMONKEY
INFRASTRUCTURE

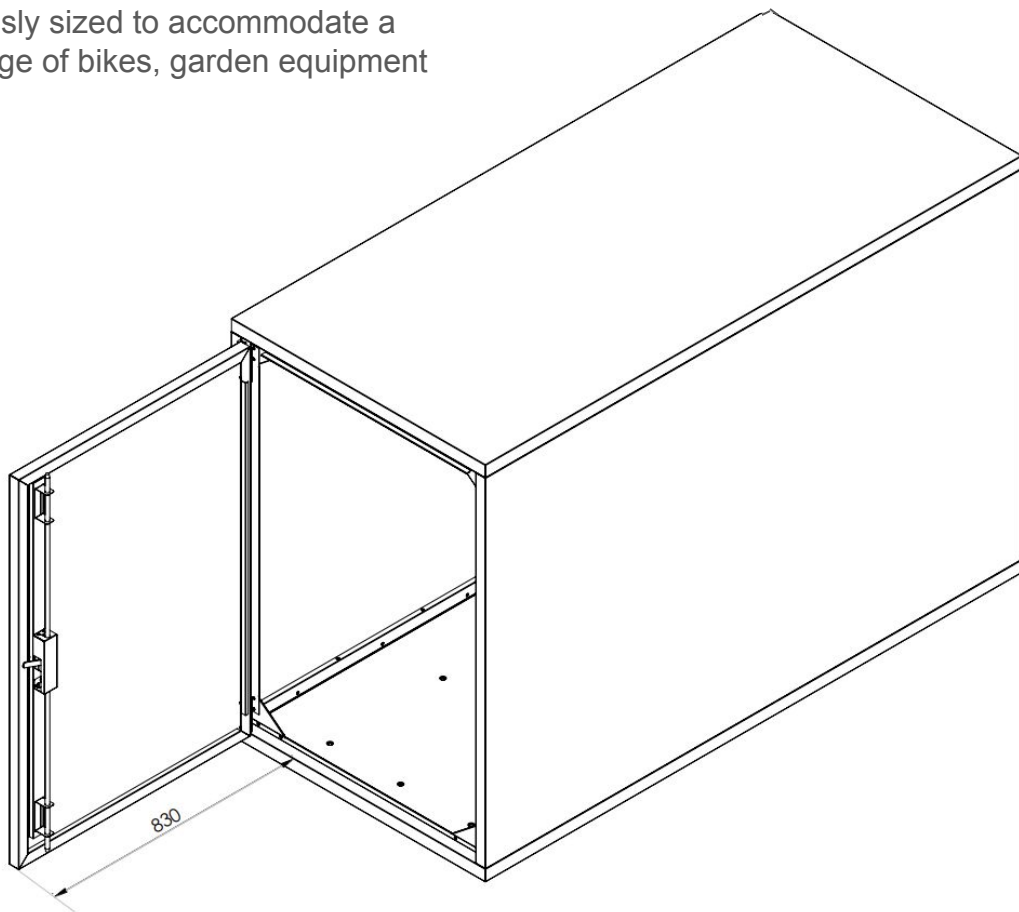


WORKSHOP@GREASEMONKEY.CC
0131 260 9739





Generously sized to accommodate a wide range of bikes, garden equipment or toys.



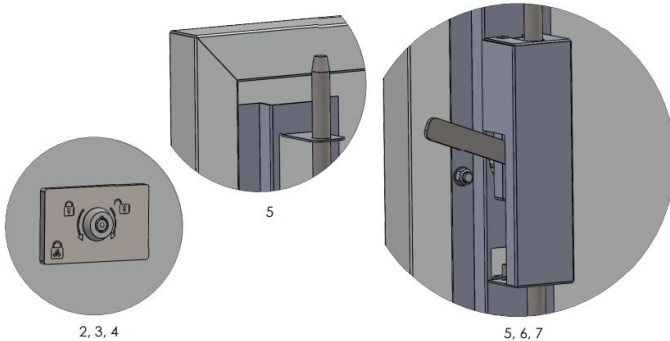


SPECIFICATIONS:

- Sold Secure designed and tested to Sold Secure Pedal Cycle Diamond (5 minute resistance hand and power tools)
- Even-pin, radial pin tumbler locking cylinder with stainless steel and brass body, anti-drill centre and pick resistance
- Master key options available with custom keys that require prior authorization before new keys can be cut
- 6mm drill and grinder resistant, stainless steel face plate
- 3-point locking system with stainless steel grinder resistant locking rods
- Compact gear actuator to resist bending
- Internal lock cover to prevent users tampering with locking mechanism
- Steel construction with interlocking profiles providing an extremely stiff body
- Unit operating temperature -30°C to +80°
- 10 year guarantee

DIMENSIONS:

- Height: 1280mm (aperture: 1144mm)
- Width: 900mm (aperture: 800mm) -
- Depth: 1900mm
- Door clearance: 830mm
- 127kg per unit

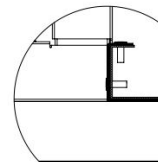


MATERIALS:

- Panelling made from pre-galvanised sheet;
- Strong, 1.2mm thick galvanised steel construction -
- Available in any RAL colour (Standard colour: Anthracite)
- Integrated door stopper
- 4x 10mm galvanised steel ground anchors
- Integrated studs to keep locker floor above moist surfaces
- Shim wedge strips to compensate for installation on an uneven floor
- Optional -integrated- accessories: Storage shelves, hooks for helmets etc., electronic access,

WHY THE VELOHOME?:

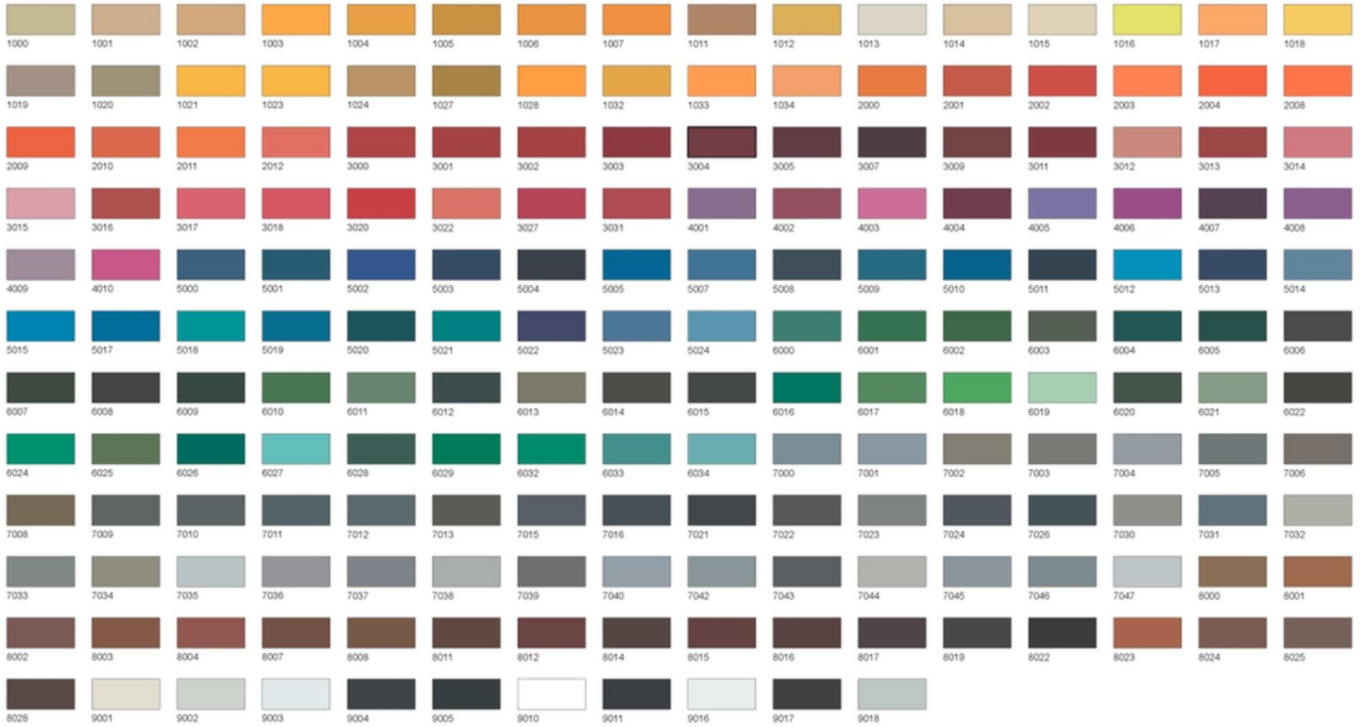
- Manufactured & made in the UK
- Generous sizing to accommodate wide range of bikes, toys & garden equipment
- Most **secure** domestic unit on the market
- Fully enclosed unit
- Individual panels are repairable and recyclable
- Can be delivered flat packed or assembled on site
- Access can be double ended



8

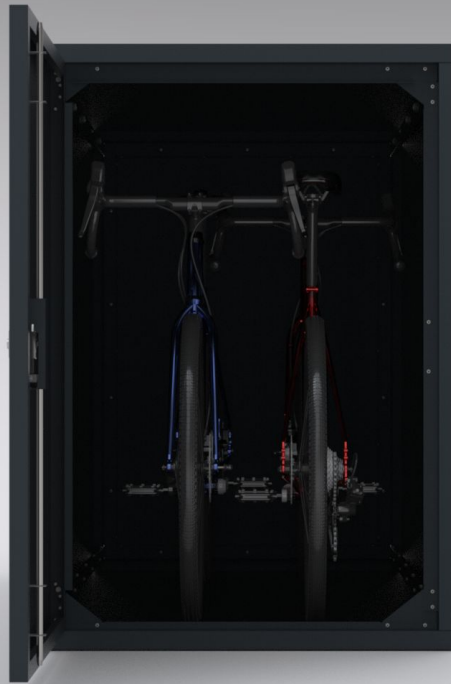


RAL





GREASEMONKEY INFRASTRUCTURE



WORKSHOP@GREASEMONKEY.CC
0131 260 9739

