

VELOBOX - GEN 5.0



GREASEMONKEY INFRASTRUCTURE



WORKSHOP@GREASEMONKEY.CC
0131 260 9739



GREASE
MONKEY
INFRASTRUCTURE



OUTSIDE DIMENSIONS

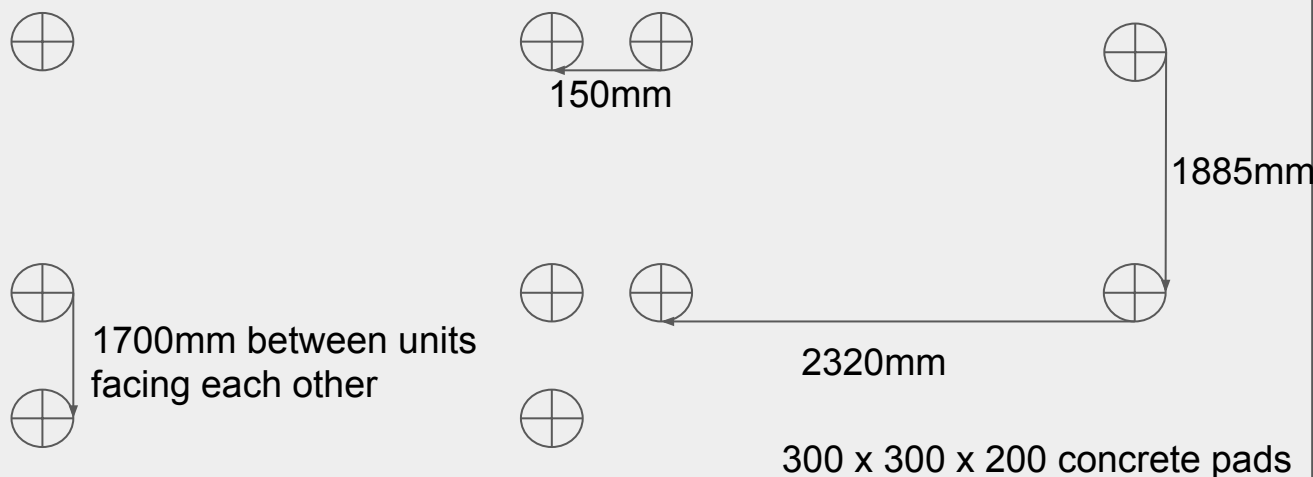


FEET DIMENSIONS - centre to centre





SETTING OUT DIMENSIONS



BEFORE INSTALLATION

- Concrete base ST4 (standardised Prescribed Mix) min 100mm deep & at least 100mm larger than footprint on each side, poured to adjacent levels or with suitable ramp for safe access.
- Concrete pockets (ST4 Standardised Prescribed Mix) are only suitable for use in mono block, cobbled or other sealed hard stand.

INSTALLATION PROCESS

Units are located into position by rolling on skates or adjacent unloading via mini HIAB.

Access must be clear for unloading and use of skates. Skates can **only** be used on hard surfaces such as tarmac, concrete, or mono block. Any other surface is unsuitable.

IMPORTANT INFORMATION:

The VELOBOX must be set out on a hard surface such as tarmac; concrete; concrete slabs in order for maximum commissioning & use.

The door **must** open on to the same level when accessing the unit for the user's ease of accessibility.

This will ensure optimum usage of the unit and accessibility for all users. Locating the unit on a plinth is unsuitable.



SPECIFICATIONS:

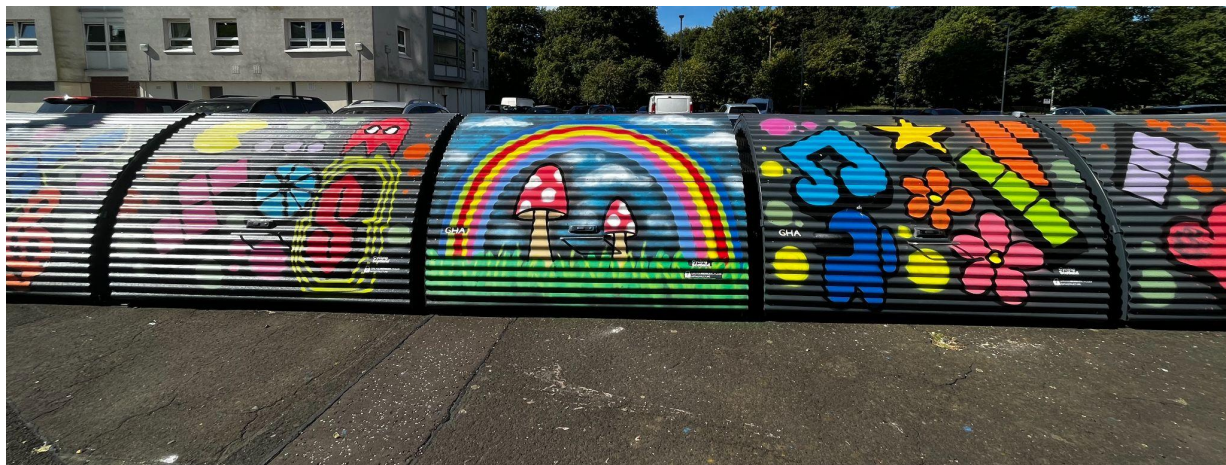
- 2 units fit in one 2.4 x 4.8m parking space;
- Designed in compliance with Sold Secure Gold, working towards Diamond accreditation;
- Gas strut supported; easy to open & close;
- Secure central locking system; master-keyed by locksmith;
- Wheelholders & supports for 6 bikes;
- Removable wheelholder to fit pushchair
- Removeable bike rack to fit cargo bikes (lockable to frame);
- High visibility reflectos at both ends of product;
- Optional - integrated - accessories: planter, bench, electric bike charger, EV charger, privacy sheets
- 5 year guarantee when maintained in accordance with our maintenance system
- 10 year guarantee if maintained by Grease Monkey

MATERIALS:

- Hot dip galvanised frame (BS EN ISO 1461), gable ends and cladding available in any RAL colour;
- Galvanised, fully adjustable feet, suitable for resin anchors;

WEIGHT:

- 250kg per unit

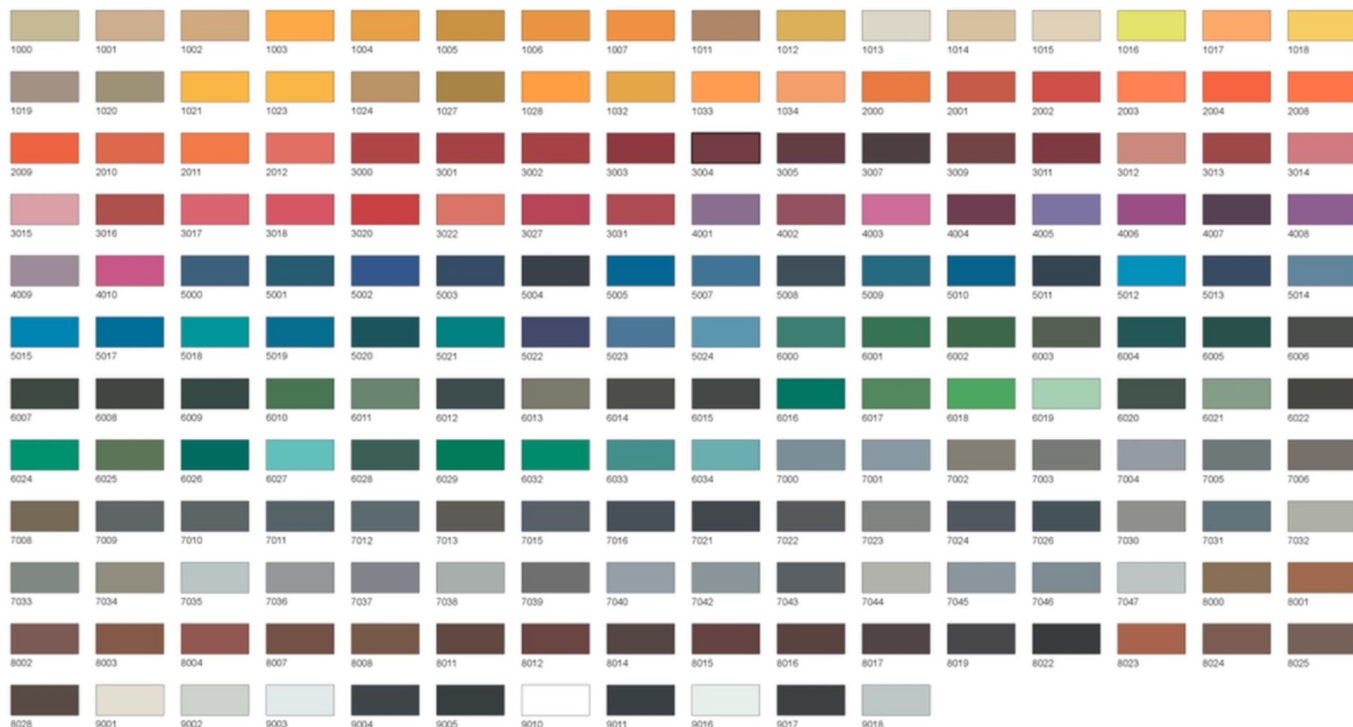


COLOURS



GREASEMONKEY INFRASTRUCTURE

RAL



WORKSHOP@GREASEMONKEY.CC
0131 260 9739

